

Tire options, on a new machine

Options



20 x 8.00 - 10

200 series TR MW20810T
 200 series Grass MW20810G

220	225	225LPG	313S	320S	320S+	420	423	520	523	525LPG	528	530	R20	R28	R35	630	635	640	745	750	755i	760i	e5	e6	



4 x 12

300 series TR MW412T

220	225	225LPG	313S	320S	320S+	420	423	520	523	525LPG	528	530	R20	R28	R35	630	635	640	745	750	755i	760i	e5	e6	



5 x 10

300 series TR MW510T
 400 series TR MW6.510T

220	225	225LPG	313S	320S	320S+	420	423	520	523	525LPG	528	530	R20	R28	R35	630	635	640	745	750	755i	760i	e5	e6	



23 x 8.50-12

300 series Grass MW238512G
 400 series Grass MW6.238512G
 500-, 600-, e series, 525LPG TR MW5.238512T
 500-, 600-, e series, 525LPG Grass MW5.238512G
 R series TR MW6.238512T
 R series Grass MW6.238512G

220	225	225LPG	313S	320S	320S+	420	423	520	523	525LPG	528	530	R20	R28	R35	630	635	640	745	750	755i	760i	e5	e6	

Standard
 Option
 Not available



23 x 10.50-12

300 series	Grass	MW2310512T
400 series	TR	MW6.2310512T
400 series	Grass	MW6.2310512G
500-, 600-, e series, 525LPG	Grass	MW5.2310512G
R35 series	TR	MW6.2310512T
R series	Grass	MW6.2310512G

220	225	225LPG	313S	320S	320S+	420	423	520	523	525LPG	528	530	R20	R28	R35	630	635	640	745	750	755i	760i	e5	e6	



26 x 12.00-12

500-, e series, 525LPG	Grass	MW10.261212G
500-, e series, 525LPG	TR	MW10.261212T
600 series	Grass	MW10.261212G
745, 750, 755i	Grass	MW10.261212G
R20, R28	TR	MW6.261212T
R20, R28	Grass	MW6.261212G
R35	Grass	MW6.261212G

220	225	225LPG	313S	320S	320S+	420	423	520	523	525LPG	528	530	R20	R28	R35	630	635	640	745	750	755i	760i	e5	e6	



320/60 - 12 HD

500-, 600-, e series, 525LPG	TR	MW10.3206012T
750	TR	MW10.3206012T
R series	TR	MW10.3206012T

220	225	225LPG	313S	320S	320S+	420	423	520	523	525LPG	528	530	R20	R28	R35	630	635	640	745	750	755i	760i	e5	e6	



27 x 8.50-15

500-, 600-, e series, 525LPG	TR	MW10.278515T
700 series	TR	MW10.278515T
R series	TR	MW6.278515T

220	225	225LPG	313S	320S	320S+	420	423	520	523	525LPG	528	530	R20	R28	R35	630	635	640	745	750	755i	760i	e5	e6	

 Standard

 Option

 Not available



26.5 x 14.00-12

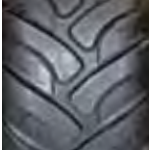
500-, 600-, e series, 525LPG* Grass MW10.2651412G
 * Requires 4 pcs A417486 40 mm spacers
 700 series Grass MW10.2651412G



Spacer kit, 4 pcs A418958

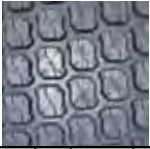
Options

220	225	225LPG	313S	320S	320S+	420	423	520	523	525LPG	528	530	R20	R28	R35	630	635	640	745	750	755i	760i	e5	e6	



320/55-15 HD

750 Grass MW10.3205515G
 745, 755i Grass MW10.3205515G
 745, 755i TR MW10.3205515T



220	225	225LPG	313S	320S	320S+	420	423	520	523	525LPG	528	530	R20	R28	R35	630	635	640	745	750	755i	760i	e5	e6	



400/50-15

750 Grass MW10.4005015G
 750 TR MW10.4005015
 760i Grass MW10.4005015G



220	225	225LPG	313S	320S	320S+	420	423	520	523	525LPG	528	530	R20	R28	R35	630	635	640	745	750	755i	760i	e5	e6	



Standard



Option



Not available

Telescopic boom

Options



Telescopic boom gives more outreach and lifting height, which helps loading and reaching a lot. It is also easy to adjust the distance between the front wheels and the attachment with the telescopic boom, and you can also push the loader with the teleboom if necessary. Depending on model, telescopic boom gives 400-700 mm more outreach, and the extra lifting height is about 400 mm.

300 series A2628
400 series A21359

220	225	225LPG	313S	320S	320S+	420	423	520	523	525LPG	528	530	R20	R28	R35	630	635	640	745	750	755i	760i	e5	e6	

Boom self levelling

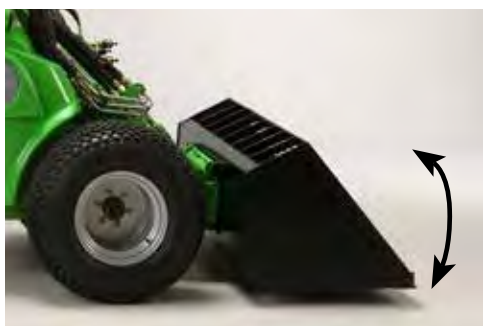


Self levelling system keeps the position of the attachment the same in relation to the ground, regardless of the position of the boom. Self levelling is hydraulic: there is a levelling cylinder on the left side of the boom which follows the movements of the bucket tilt cylinder and keeps the attachment level. Self levelling is disabled when boom floating is switched on.

500-, e series A35553
R20 and R28 A35886
R35 A35868
600 series, 525 A34144
700 series A35007

220	225	225LPG	313S	320S	320S+	420	423	520	523	525LPG	528	530	R20	R28	R35	630	635	640	745	750	755i	760i	e5	e6	

Boom floating, machine without self levelling



Boom floating system releases the lift cylinder so that the boom moves freely upwards from the position where it is when boom floating is switched on, allowing the attachment to follow the contours of the ground.

200 series A421697
300 series A31438
400-, 500-, 600-, 700-, e series,
525LPG A47773
R20, R28 A416515
R35 A416680

220	225	225LPG	313S	320S	320S+	420	423	520	523	525LPG	528	530	R20	R28	R35	630	635	640	745	750	755i	760i	e5	e6	

Standard
 Option
 Not available

Boom floating, machine with self levelling



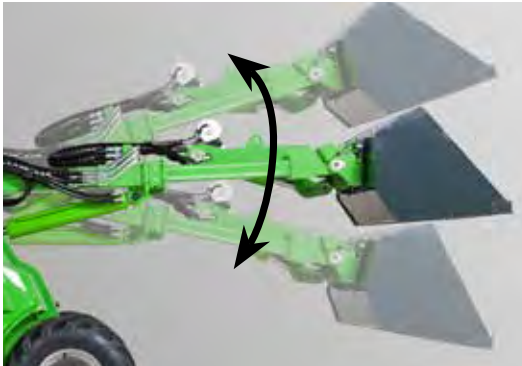
Boom floating can also be installed on machines with boom self levelling. The boom floating valve bypasses boom self levelling, which means that boom self levelling doesn't work when boom floating is switched on.

- 500-, 600-, 700-, e series,
- 525LPG A34015
- R20, R28 A35929
- R35 A35930

Options

220	225	225LPG	313S	320S	320S+	420	423	520	523	525LPG	528	530	R20	R28	R35	630	635	640	745	750	755i	760i	e5	e6	

Smooth drive (boom suspension)

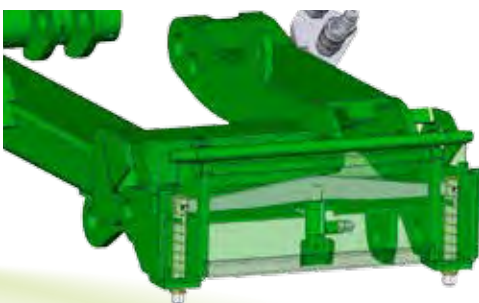


Smooth drive is a shock absorber system for the boom. When driving at high speed with a heavy load or heavy attachment the boom starts to move up and down, making driving bumpy. Smooth drive consists of an accumulator which absorbs and eliminates boom movements and makes driving considerably smoother and more stable. Smooth drive requires boom self levelling and boom floating on the loader.

- 500 series A424825
- 600 series A35830
- 700 series A35719

220	225	225LPG	313S	320S	320S+	420	423	520	523	525LPG	528	530	R20	R28	R35	630	635	640	745	750	755i	760i	e5	e6	

Hydraulic attachment coupling plate



The hydraulic attachment coupling plate enables coupling and disconnecting of the attachment from driver's seat. There is a hydraulic cylinder on the attachment coupling plate which moves the locking pins up and down. The electro-hydraulic system works also when the engine is not running, as long as the ignition switch is in "ON" position (current on).

- 500-, 600-, 700-, e-, R series,
- 525LPG A34956

220	225	225LPG	313S	320S	320S+	420	423	520	523	525LPG	528	530	R20	R28	R35	630	635	640	745	750	755i	760i	e5	e6	

Standard
 Option
 Not available

Joystick 6 functions



On the 6 function joystick the operation of auxiliary hydraulics (hydraulically driven attachments) happens with two buttons on the joystick. This makes work faster and more comfortable, because you don't need to move your hand from the joystick to the auxiliary hydraulics control lever when operating the attachment, and you can also lift the boom and tilt the attachment at the same time if necessary.

200 series A36785
 400 series A35479
 500-, e series A35754
 R20, R28 A35878

220	225	225LPG	313S	320S	320S+	420	423	520	523	525LPG	528	530	R20	R28	R35	630	635	640	745	750	755i	760i	e5	e6	

Joystick 8 functions



On the 8 function joystick both the auxiliary hydraulics and the telescopic boom can be controlled with the switches on the joystick. This speeds up both loading and working with hydraulic attachments.

600 series, 525 A47829
 R35 A35867
 700 series A47829

220	225	225LPG	313S	320S	320S+	420	423	520	523	525LPG	528	530	R20	R28	R35	630	635	640	745	750	755i	760i	e5	e6	

Attachment control switch pack



Electric functions of the attachment (e.g. electric turning of the rotary broom, water spraying on collecting broom, rotation of timber grab etc.) are controlled with the attachment control switch pack. It mounts on the boom control lever so that the switches are easy to operate with the right thumb. The electric 7-pole socket mounts on the loader's auxiliary hydraulics multi connector, and the corresponding socket of the attachment electric wire is mounted on the attachment multi connector. This way both the electric wire and the hydraulic hoses of the attachment are connected at the same time with the multi connector. Not available with hand drive.

200 series A36880
 400-, 500-, 600-, 700- and e series A36878
 R series A36879

220	225	225LPG	313S	320S	320S+	420	423	520	523	525LPG	528	530	R20	R28	R35	630	635	640	745	750	755i	760i	e5	e6	

Standard
 Option
 Not available

Adapter cable for attachment control switch pack



Avant loaders manufactured before 2016, where the socket of the attachment control switch pack is not on the multi connector can be retrofitted with an adapter cable. It mounts on the multi connector, and the electric wire from the attachments control switch pack is connected to this adapter cable. The attachment can also be retrofitted with a corresponding adapter cable if necessary, see back page. With this updated adapter cable both the electric wire and the hydraulic hoses are connected at the same time with the multi connector.

Adapter cable A36869

220	225	225LPG	313S	320S	320S+	420	423	520	523	525LPG	528	530	R20	R28	R35	630	635	640	745	750	755i	760i	e5	e6	

Auxiliary hydraulics outlet in the rear, single acting



Single acting rear auxiliary hydraulics is equipped with one pressure line. It makes it possible to operate hydraulic attachments with single function.

400 series A34636
 500 series A35882
 525LPG A35020
 R20 and R28 A35879
 R35 A35927
 600 series A34014

220	225	225LPG	313S	320S	320S+	420	423	520	523	525LPG	528	530	R20	R28	R35	630	635	640	745	750	755i	760i	e5	e6	

Auxiliary hydraulics outlet in the rear, double acting



Double acting rear hydraulics is equipped with pressure and return line (on 400-700 series also with tank line), and it makes it possible to operate rear mounted hydraulic attachments like tipping trailer, sand spreader etc.

200 series A36871 (Not with hand drive)
 400 series A34632
 500 series A35881
 525LPG A35019
 R20 and R28 A35926
 R35 A35928
 600 series A47774
 745/750 A418840
 755i/760i A418844

220	225	225LPG	313S	320S	320S+	420	423	520	523	525LPG	528	530	R20	R28	R35	630	635	640	745	750	755i	760i	e5	e6	

Standard

Option

Not available

Second auxiliary hydraulics outlet in the front



In addition to the standard auxiliary hydraulics outlet in the front, equipped with multi connector, the loader can be equipped with an extra double acting outlet which mounts under the multi connector. It is double acting (pressure-return) and equipped with conventional quick couplers. If the extra front outlet is installed, rear auxiliary hydraulics outlet is not possible, and vice versa.

400 series,	A35504
500 and e series	A35884
600 series, 525	A35462
700 series	A35477

220	225	225LPG	313S	320S	320S+	420	423	520	523	525LPG	528	530	R20	R28	R35	630	635	640	745	750	755i	760i	e5	e6	

Drive release valve



The drive release valve diverts the oil flow between the left and right side hydraulic drive motors, and this has an effect on the pulling force. When the valve is open the hydraulic oil flows in series from motor to motor. The wheels roll freely and the loader leaves less tire marks on soft and sensitive surfaces. When the valve is closed, the hydraulic oil flows in parallel between the hydraulic motors on each side, similar to a differential lock in operation. This improves traction and towing capacity of the loader.

400 series	A411326
R series	A412225

220	225	225LPG	313S	320S	320S+	420	423	520	523	525LPG	528	530	R20	R28	R35	630	635	640	745	750	755i	760i	e5	e6	

Anti slip valve



The anti slip valve positively diverts oil flow between the right and left side hydraulic drive motors (forces the oil to flow to both right and left side drive motors) and improves traction on slippery and uneven surfaces. The function of the anti slip valve depends also on the drive release valve: when the drive release valve is closed the anti slip valve diverts oil flow to the drive motors on all four wheels. When the drive release valve is open the anti slip valve diverts the oil flow between the front wheels only.

200 series	A49548
400 series	A34753
500-, 600 series	A424303
525LPG	A35506
R series	A34542
700 series	A37362
e series	A422257

220	225	225LPG	313S	320S	320S+	420	423	520	523	525LPG	528	530	R20	R28	R35	630	635	640	745	750	755i	760i	e5	e6	



Standard



Option



Not available

Back weight



The extra 29 kg counterweight mounts on the rear bumper. It is equipped with handle and fastening hooks, so it is easy to just drop the weight on the bumper, and also to connect the weights on each other. Trailer couplings A417323 and A417337 can also be mounted on the weight.

Back weight A35957

Options

220	225	225LPG	313S	320S	320S+	420	423	520	523	525LPG	528	530	R20	R28	R35	630	635	640	745	750	755i	760i	e5	e6	

Rear side weights 80 kg



Rear side weights mount behind the rear wheels. They are delivered in pair: one on the left and one on the right side. Weight of the kit is 80 kg, and it is intended mainly fo 400 series, but can be mounted on bigger Avants as well.

Rear side weights 80 kg A36401

220	225	225LPG	313S	320S	320S+	420	423	520	523	525LPG	528	530	R20	R28	R35	630	635	640	745	750	755i	760i	e5	e6	

Rear side weights 180 kg



Rear side weights mount behind the rear wheels. They are delivered in pair: one on the left and one on the right side. Weight of the kit is 180 kg.

Rear side weights 180 kg A49063

220	225	225LPG	313S	320S	320S+	420	423	520	523	525LPG	528	530	R20	R28	R35	630	635	640	745	750	755i	760i	e5	e6	

Standard

Option

Not available

Wheel weight

Options



Avant 200 series can be equipped with 14 kg wheel weights which mount on the rim with special bolts. They make the center of gravity of the machine lower and add weight, which improves the stability of the loader.

200 series A46584

220	225	225LPG	313S	320S	320S+	420	423	520	523	525LPG	528	530	R20	R28	R35	630	635	640	745	750	755i	760i	e5	e6	

Light rear bumper



Avant 500 and 600 series are equipped with the 170 kg rear bumper as standard, but if a lighter machine is required – for instance when driving on surfaces with limited carrying capacity – the light rear bumper can be installed instead of the standard bumper. It reduces total machine weight by about 150 kg.

Light rear bumper A36887

220	225	225LPG	313S	320S	320S+	420	423	520	523	525LPG	528	530	R20	R28	R35	630	635	640	745	750	755i	760i	e5	e6	

Attachment coupling plate in the rear



Makes it possible to mount and transport attachments in the rear. The standard 170 kg rear bumper must be removed, and extra counterweights, rear side weights and trailer couplings can not be installed.

528, 530 and 600 series A35413

700 series A36552

220	225	225LPG	313S	320S	320S+	420	423	520	523	525LPG	528	530	R20	R28	R35	630	635	640	745	750	755i	760i	e5	e6	

Standard
 Option
 Not available

Rear lifting device



The hydraulic rear lifting device allows mounting of some attachments in the rear of the machine, for example a sand spreader or a rotary hoe. This also means that it is possible to mount a bucket or a dozer blade in the front at the same time. Rear lifting device comes with a double acting rear auxiliary hydraulics outlet, and it is equipped with a floating position as well.

Rear lifting device A33658

220	225	225LPG	313S	320S	320S+	420	423	520	523	525LPG	528	530	R20	R28	R35	630	635	640	745	750	755i	760i	e5	e6	

Trailer coupling



There are two types of trailer couplings available: a 50 mm ball hitch and a 50 mm ball hitch with towing pin. Both can be mounted either directly on the rear bumper or on the extra back weight. Avant 200 series is equipped with a 50 mm ball hitch as standard.

Ball hitch A417323

Ball hitch with towing pin A417337

220	225	225LPG	313S	320S	320S+	420	423	520	523	525LPG	528	530	R20	R28	R35	630	635	640	745	750	755i	760i	e5	e6	

Rear guard



The rear guard protects the rear and the radiator of the engine. It mounts with four bolts and is easy to install and take off. The rear guard is equipped with tie down brackets and allows mounting of back weights and/or trailer coupling at the same time.

Rear guard A36572

220	225	225LPG	313S	320S	320S+	420	423	520	523	525LPG	528	530	R20	R28	R35	630	635	640	745	750	755i	760i	e5	e6	

Standard

Option

Not available

Work light kit, on ROPS frame

Options



The work light kit consists of three LED lights: 2 to the front, 1 to the rear. Two types of LED lights available: 700 lumen or 2400 lumen.

200 series, 700 lumen A36866
 400-700-, e- and R series, 700 lumen A33916
 400-700-, e- and R series, 2400 lumen A34917

220	225	225LPG	313S	320S	320S+	420	423	520	523	525LPG	528	530	R20	R28	R35	630	635	640	745	750	755i	760i	e5	e6	

Work light kit, on cab LX



The work light kit can also be mounted on cab LX, with the same 700 lumen or 2400 lumen lights.

500-700 series, 700 lumen A35732
 500-700 series, 2400 lumen A35731

220	225	225LPG	313S	320S	320S+	420	423	520	523	525LPG	528	530	R20	R28	R35	630	635	640	745	750	755i	760i	e5	e6	

Work light, 300 series



On Avant 300 series the optional work light is mounted on the left side of the front chassis.

300 series A124

220	225	225LPG	313S	320S	320S+	420	423	520	523	525LPG	528	530	R20	R28	R35	630	635	640	745	750	755i	760i	e5	e6	



Standard



Option



Not available

Road traffic light kit



The road traffic light kit consists of headlamps, blinkers, reflectors and beacon. It enables road traffic registration in certain countries. Requirements vary in different countries, please consult your local Avant distributor.

200 series	A36773
400 series	A34614
500-600 series, on ROPS	A33912
700 series, on ROPS	A34235
R series, on ROPS	A35915
500-600 series, on cab LX	A35352
700 series, on cab LX	A35355
7-way trailer socket	
400-600 series	A48690
700 series	A418817

220	225	225LPG	313S	320S	320S+	420	423	520	523	525LPG	528	530	R20	R28	R35	630	635	640	745	750	755i	760i	e5	e6	

Beacon



The rotating warning beacon is equipped with a very bright xenon lamp. It mounts on a tiltable socket and is easy to install and take off.

200 series	A421008
400-700-, e- and R series	A34002

220	225	225LPG	313S	320S	320S+	420	423	520	523	525LPG	528	530	R20	R28	R35	630	635	640	745	750	755i	760i	e5	e6	

Beacon light bar



The beacon light bar is available for cab DLX only, instead of the rotating warning beacon.

Beacon light bar	A36739
------------------	--------

220	225	225LPG	313S	320S	320S+	420	423	520	523	525LPG	528	530	R20	R28	R35	630	635	640	745	750	755i	760i	e5	e6	

Standard

Option

Not available

Cab L

Options



Avant Cab L is an excellent and economical choice when the operator wants to have protection against rain, wind and snowfall. It improves operator comfort and working conditions considerably. The cab mounts on the standard ROPS frame, which means safety is guaranteed. It consists of windscreen (equipped with wiper and washer), right side window and rear window. Door is available for 200 series cab L.

- 200 series A3668 I
- Door, cab L 200 series A37278
- 400 series A34624
- 500-,600-,700-,e series,525LPG A21592
- R series A35894

Cab L requires the 50 mm higher 600/700 series ROPS frame on 500, R and e series and on 525LPG.

220	225	225LPG	313S	320S	320S+	420	423	520	523	525LPG	528	530	R20	R28	R35	630	635	640	745	750	755i	760i	e5	e6	

Rear wall



The rear wall mounts on the ROPS frame. It gives protection against wind and light rain.

- 400 series A412299
- 500-,600-,700-,R-,e series,525LPG A49446

Rear wall requires the 50 mm higher 600/700 series ROPS frame on 500, R and e series and on 525LPG.

220	225	225LPG	313S	320S	320S+	420	423	520	523	525LPG	528	530	R20	R28	R35	630	635	640	745	750	755i	760i	e5	e6	

Cab LX



The cab LX provides the option of a heated cab. It has all the features of the L cab with addition of a door and a heater to further improve operator comfort in harsh weather conditions. For warmer seasons the door and windows can easily be removed if required. Front mudguards are standard equipment, rear mudguards are available as an option. Cab LX is an independent ROPS/FOPS structure and cannot be retrofitted.

- 500, 600 and 700 series A21517

220	225	225LPG	313S	320S	320S+	420	423	520	523	525LPG	528	530	R20	R28	R35	630	635	640	745	750	755i	760i	e5	e6	

Standard

Option

Not available

Cab DLX



The top of the range cab DLX is equipped with heater, noise reducing interior materials, radio, cab air filter, LED work light kit, road traffic light kit, front and rear mudguards. Air conditioning, air suspension seat and beacon light bar are available as an option. A/C unit can be mounted either on the roof - or behind the rear window if a lower machine height is required. The spacious and ergonomic cab DLX represents modern cab design at its best.

- Cab DLX, 500/600 series A21444
 - Cab DLX, 700 series A21465
 - Cab DLX, AC (Unit position rear) 635/640 A21463
 - Cab DLX, AC (Unit position roof) 635/640 A21511
 - Cab DLX, AC (Unit position rear) 700 series A21464
 - Cab DLX, AC (Unit position roof) 700 series A21510
 - Air suspension seat A413706
- AC is available for 635,640 and 700 series.

Options

220	225	225LPG	313S	320S	320S+	420	423	520	523	525LPG	528	530	R20	R28	R35	630	635	640	745	750	755i	760i	e5	e6	

HD cover plates



HD cover plates are made of extra shock resistant polycarbonate with great tensile strength. They can take the beating on the construction site and will even resist jumping on them. The HD covers are as shiny as the standard ABS covers.

- 420/423 A35662
- 520/523 ROPS frame A36079
- 520/523 LX/DLX A35666
- 525LPG A36078
- R series A36142
- 528/530, 600 series ROPS, no rear mudguards A36080
- 528/530, 600 series ROPS & rear mudguards A36081
- 528/530, 600 series LX/DLX, no rear mudguards A35670
- 528/530, 600 series LX/DLX & rear mudguards A35669
- 700 series ROPS, no rear mudguards A36876
- 700 series ROPS & rear mudguards A36875
- 700 series LX/DLX, no rear mudguards A36877
- 700 series LX/DLX & rear mudguards A36483
- e series A434350

220	225	225LPG	313S	320S	320S+	420	423	520	523	525LPG	528	530	R20	R28	R35	630	635	640	745	750	755i	760i	e5	e6	

Standard

Option

Not available

Mudguards rear

Options



Rear mudguards are available as an option on a new machine, they cannot be retrofitted.

528/530, 600 series* A35237

* With 26x12.00-12 and 320/60-12HD tires

700 series** A420520

** With 320/60-12HD, 320/55-15 and 400/50-15

220	225	225LPG	313S	320S	320S+	420	423	520	523	525LPG	528	530	R20	R28	R35	630	635	640	745	750	755i	760i	e5	e6	

Suspension seat



Suspension seat is optional equipment on 200 and 400 series. It is equipped with arm rests, seat belt and heater.

200- and 400 series A2522

220	225	225LPG	313S	320S	320S+	420	423	520	523	525LPG	528	530	R20	R28	R35	630	635	640	745	750	755i	760i	e5	e6	

Full suspension seat



The full suspension seat with larger suspension is standard equipment on 600 and 700 series. It is equipped with seat belt, arm rests and heater.

600- and 700 series 64853

220	225	225LPG	313S	320S	320S+	420	423	520	523	525LPG	528	530	R20	R28	R35	630	635	640	745	750	755i	760i	e5	e6	

Standard

Option

Not available

Engine heater



Engine heater facilitates starting in low ambient temperatures and saves the engine and reduces fuel consumption when starting in the cold.

200 series, radiation	A420503
320S,420,520,525,R20, block	A410647
423/523, block	A425277
528,530,R28,R35,600 series, block	A410648
745 and 750, block	A419475
755i and 760i, block	A419474

220	225	225LPG	313S	320S	320S+	420	423	520	523	525LPG	528	530	R20	R28	R35	630	635	640	745	750	755i	760i	e5	e6	

Exhaust purifier



Exhaust purifier can be mounted instead of the standard exhaust muffler. It reduces diesel engine emissions.

320S	64672
420, 520	A410226
423, 523	A424843
R20	A36145
528,530,R28,R35,600 series	A35513
745, 750	A419712

220	225	225LPG	313S	320S	320S+	420	423	520	523	525LPG	528	530	R20	R28	R35	630	635	640	745	750	755i	760i	e5	e6	

Hand drive controls



Hand drive controls enables the forward-reverse driving of the loader with a switch on the joystick, instead of the drive pedals. The hand drive is proportional like the drive pedals: the more the switch is turned the faster the machine will travel. It is possible to use either the hand drive or the standard drive pedals; selection between hand drive and pedal control happens with a switch on the dashboard.

200 series	A37093
400-,500-,600-,700- and R series	A37287

220	225	225LPG	313S	320S	320S+	420	423	520	523	525LPG	528	530	R20	R28	R35	630	635	640	745	750	755i	760i	e5	e6	

Standard

Option

Not available

FOPS canopy, 300 series

Options



The FOPS canopy on 300 series is mounted on 300 series ROPS safety frame.

300 series

A2725

220	225	225LPG	313S	320S	320S+	420	423	520	523	525LPG	528	530	R20	R28	R35	630	635	640	745	750	755i	760i	e5	e6	

Hydraulic oil cooler



320S

A43546

220	225	225LPG	313S	320S	320S+	420	423	520	523	525LPG	528	530	R20	R28	R35	630	635	640	745	750	755i	760i	e5	e6	

Tool box



The lockable tool box mounts on the rear bumper.

700 series

A36573

220	225	225LPG	313S	320S	320S+	420	423	520	523	525LPG	528	530	R20	R28	R35	630	635	640	745	750	755i	760i	e5	e6



Standard



Option



Not available

Rear carrier



The tiltable rear carrier mounts on the rear bumper with bolts. It is standard equipment on rear mounted generator, compressor and pressure washer.

Rear carrier A35453

220	225	225LPG	313S	320S	320S+	420	423	520	523	525LPG	528	530	R20	R28	R35	630	635	640	745	750	755i	760i	e5	e6	

Reverse beeper



Gives a loud audible warning signal when reversing.

200 series A421116

400-,500-,600-,700-,

R-, e series A410739

220	225	225LPG	313S	320S	320S+	420	423	520	523	525LPG	528	530	R20	R28	R35	630	635	640	745	750	755i	760i	e5	e6	

Tie down bracket on wheel hub



A423161

A423091

The bracket makes it easier to tie down the loader on a trailer, truck etc. Two models: for 6-bolt wheel hub and for 5/10-bolt wheel hub

6-bolt wheel hub A423161

5 and 10 bolt wheel hub A423091

220	225	225LPG	313S	320S	320S+	420	423	520	523	525LPG	528	530	R20	R28	R35	630	635	640	745	750	755i	760i	e5	e6	



Standard



Option



Not available

Tie down bracket in the rear/on the sides

Options



The bracket can be mounted on rear bumper and/or behind the rear wheels. Makes it easier to tie down the loader on a trailer etc.

400-, 500-, 600-, 700-,
R- and e series, 525LPG A418746

220	225	225LPG	313S	320S	320S+	420	423	520	523	525LPG	528	530	R20	R28	R35	630	635	640	745	750	755i	760i	e5	e6	

Lifting kit, for machines with ROPS frame



The kit includes all necessary slings and instructions for lifting a loader equipped with ROPS frame.

200-, 400-, 500-, 600-, 700-,
R- and e series, 525LPG A418706

220	225	225LPG	313S	320S	320S+	420	423	520	523	525LPG	528	530	R20	R28	R35	630	635	640	745	750	755i	760i	e5	e6	

Lifting kit, for machines with cab LX/DLX



The kit includes all necessary lifting chains, hooks, brackets and instructions for lifting a loader equipped with cab LX/DLX.

500-, 600-, 700 series A417352

220	225	225LPG	313S	320S	320S+	420	423	520	523	525LPG	528	530	R20	R28	R35	630	635	640	745	750	755i	760i	e5	e6	



Standard



Option



Not available

Weather cover



Weather cover protects the cockpit against rain, snow, dust and dirt. The weatherproof cloth covers the entire instrument panel, steering wheel and driver's seat. The weather cover is delivered with an integrated pouch where the cover can be wrapped when not in use.

200 series 65435
 400-,500-, 600-, 700- and
 e series, 525LPG 65436

220	225	225LPG	313S	320S	320S+	420	423	520	523	525LPG	528	530	R20	R28	R35	630	635	640	745	750	755i	760i	e5	e6	

Transport cover



Protects the entire Avante loader during transports on an open trailer or truck. The material is black, robust and all-weather proof fabric which keeps the machine safe from rain, snow and dirt. Comes with a durable pouch.

200 series 65477
 400-,500-, 600- and
 e series, 525LPG 65478
 700 series 65479

220	225	225LPG	313S	320S	320S+	420	423	520	523	525LPG	528	530	R20	R28	R35	630	635	640	745	750	755i	760i	e5	e6	

Loading ramps



The lightweight and durable aluminium ramps are easy to handle and they stay clean thanks to the open grid design.

Loading ramps A65447

220	225	225LPG	313S	320S	320S+	420	423	520	523	525LPG	528	530	R20	R28	R35	630	635	640	745	750	755i	760i	e5	e6	

Standard

Option

Not available

Battery charger 12V



The battery charger is connected to the 12V outlet of the loader, which makes battery charging very easy because one doesn't need to remove the cover plates in order to get to the battery terminals directly. The charger is automatic – it changes automatically from charging to maintenance mode.

Battery charger 12V 64927

220	225	225LPG	313S	320S	320S+	420	423	520	523	525LPG	528	530	R20	R28	R35	630	635	640	745	750	755i	760i	e5	e6	

Adapter cable 12V



Connection cable, mounts on the 12V outlet on 300-700 series and 200 series 1. Equipped with a connector where you can connect a cigarette lighter plug, for instance when using a mobile phone charger.

300-, 400-, 500-, 600-, R- and e series, 525LPG 65645

220	225	225LPG	313S	320S	320S+	420	423	520	523	525LPG	528	530	R20	R28	R35	630	635	640	745	750	755i	760i	e5	e6	

Adapter plug 12V



Adapter plug to 12V outlet, mounts both on the smaller 12V outlet on 300-700 series and on the bigger outlet on 200 series 2. You can connect the electric wires of any 12V electric appliance (for instance a battery charger) to this adapter. Requires therefore some electrician skills.

Adapter plug 12V 66286

220	225	225LPG	313S	320S	320S+	420	423	520	523	525LPG	528	530	R20	R28	R35	630	635	640	745	750	755i	760i	e5	e6	

Standard

Option

Not available

Battery pack e5



Complete battery pack for Avant e5, lead-acid batteries, 240Ah, 48V.

Battery pack e5 66390

220	225	225LPG	313S	320S	320S+	420	423	520	523	525LPG	528	530	R20	R28	R35	630	635	640	745	750	755i	760i	e5	e6	

Snow chains

Snow chains are available for different tire sizes. They give excellent grip on slippery snowy and icy surfaces. Can be mounted on all four wheels or just on the front or rear axle. Delivered in a bag which includes 2 pcs chains.



SD



HD

5x10 TR, pair SD 64055
 23x8.50-12, pair SD 64746
 23x8.50-12, pair HD 64455
 23x10.50-12, pair HD 64745
 26x12.00-12, pair HD 64973
 320/60-12, pair HD 65603
 320/55-15, pair HD 65722
 27x8.50-15, pair SD 65723

220	225	225LPG	313S	320S	320S+	420	423	520	523	525LPG	528	530	R20	R28	R35	630	635	640	745	750	755i	760i	e5	e6	

Rapid battery charger, e6



The rapid charger speeds up charging of the lithium-ion battery of e6 considerably compared with the standard built-in 230V/10A battery charger. Two models available: 400V/16A charger and the more efficient 400V/32A charger. Charging time of the 16A charger from 0 to 100 % with full current is approx. 2 hours, with 32A charger around 1 hour. A good way is to charge the battery when there is some 20 % charge left - then charging to 80 % takes about 30 minutes with the 32A charger. The rapid charger comes mounted on a stand so that it is easy to move on the work site if necessary.

Rapid battery charger, e6, 400V/16A (includes stand) A426117

Rapid battery charger, e6, 400V/32A (includes stand) A425411

220	225	225LPG	313S	320S	320S+	420	423	520	523	525LPG	528	530	R20	R28	R35	630	635	640	745	750	755i	760i	e5	e6	



Standard



Option



Not available



AVANT®

AVANT Tecno OY
Ylotie 1
33470 YLOJARVI
FINLAND

Tel. +358 3 347 8800
sales@avanttecno.com



AVANT has a policy of continuing improvement,
and retains the right to change specifications without notice.
© 2018 AVANT Tecno Oy. All rights reserved.

www.avanttecno.com