

CTE TRACCESS 270

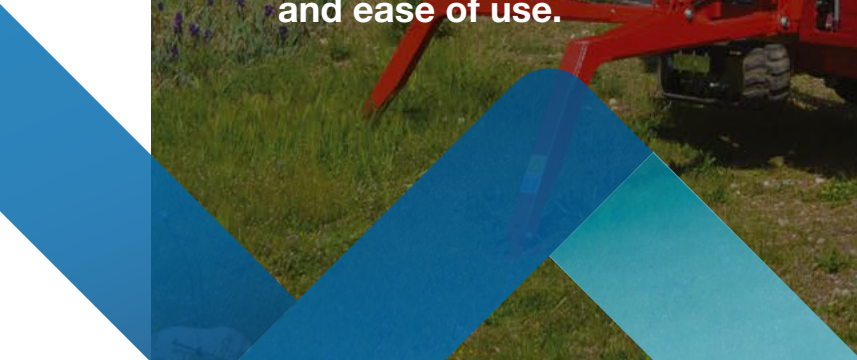
↑ 27 m

→ 14 m

👤 250 kg

Reaching higher performances in the safest way with S³ EVO.


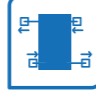






The optimal mix of performance and ease of use.



CTE TRACCESS 270

Top of the range of TRACCESS family with impressive 27 m working height, 14 m of max outreach and 250 kg of nominal capacity in the entire working envelope.



-  **Unrestricted working area**
-  **The most versatile stabiliser configuration**
-  **Doorway access**
-    **Different power sources available**
-  **Winch with 230 Kg lifting capacity**
-  **S³ EVO**

TECHNICAL DATA

- » Articulated boom (two elements) + telescopic boom (main boom + 2 extension) + jib
- » Sigma boom articulation
- » Boom rotation $\pm 300^\circ$ non-continuous
- » Smooth proportional simultaneous controls with acceleration and deceleration ramps
- » Wireless remote controller with plug in for electrohydraulic controls in the basket and from the ground
- » Translation controlled by radio command and cable from the ground and from the basket
- » Graphic diagnostic display
- » Motor start and stop by radio control
- » Quick release aluminum basket with wheels (1300x700x1100)
- » 90° right + 90° left hydraulic basket rotation
- » Master-Slave basket leveling with manual level management from the basket and electronic un-leveling
- » Extendable width track
- » Dual drive speed
- » Load cell
- » 4 outriggers with sensor contacts and outrigger covers
- » Stabilization management with S3 EVO with 4 independent stabilizers
- » Home function
- » Smart ramps
- » Anticrush
- » Basket self-centering
- » Rise&drive jib functionality



watch the video



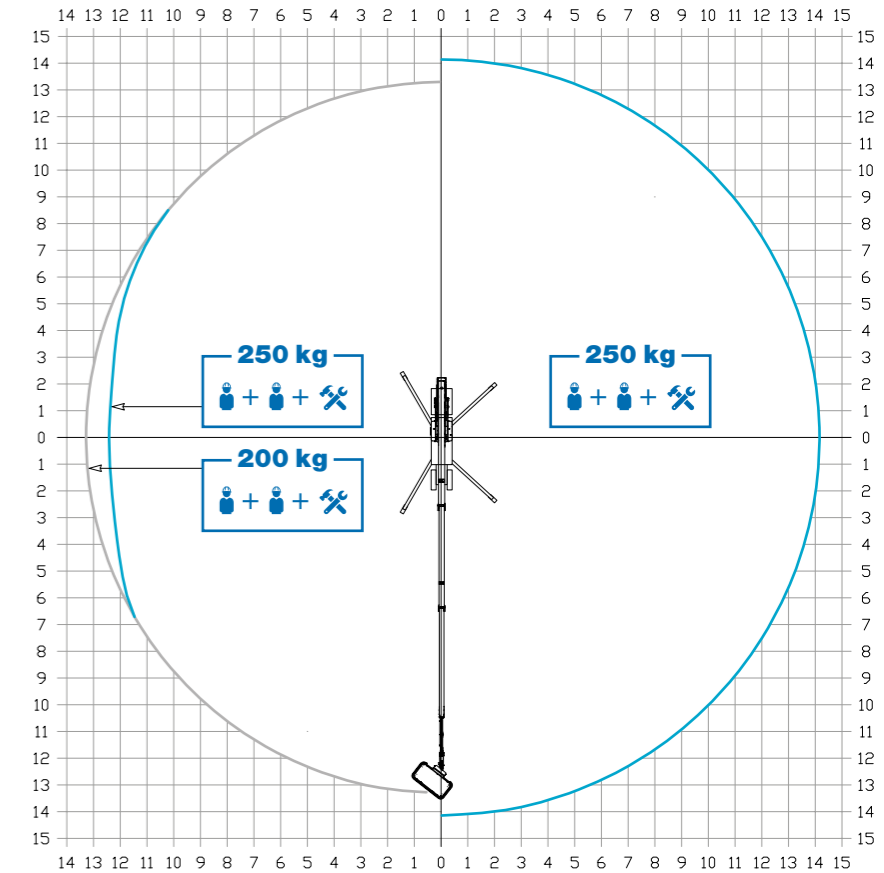
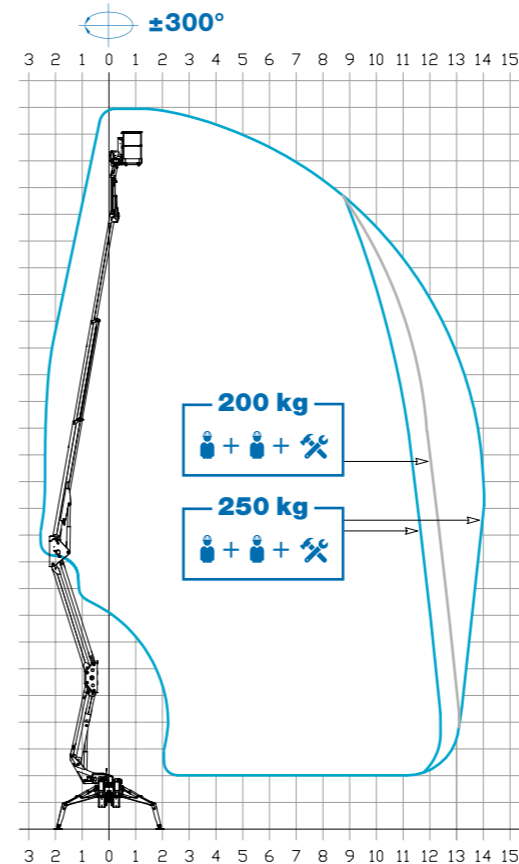
WHEELED, EASY-REMOVABLE BASKET

48 V BATTERY KIT FOR HYBRID USE

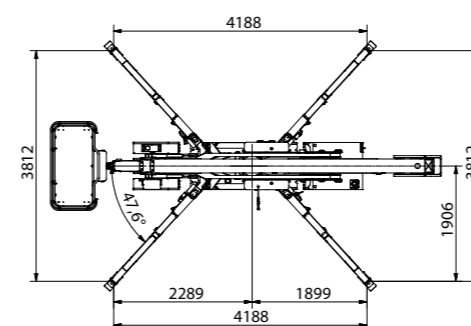
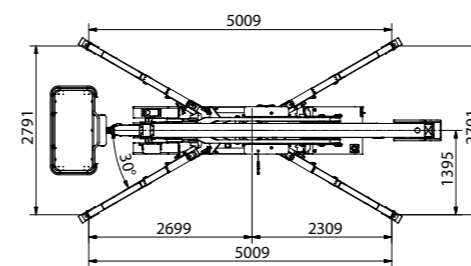
EASIER SELF-LOADING OPERATIONS

VALVE BLOCK PROTECTION KIT

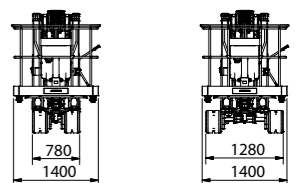
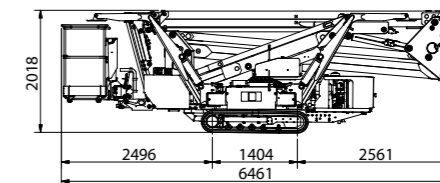
WORKING ENVELOPE





OUTRIGGER FOOTPRINT



DIMENSIONS

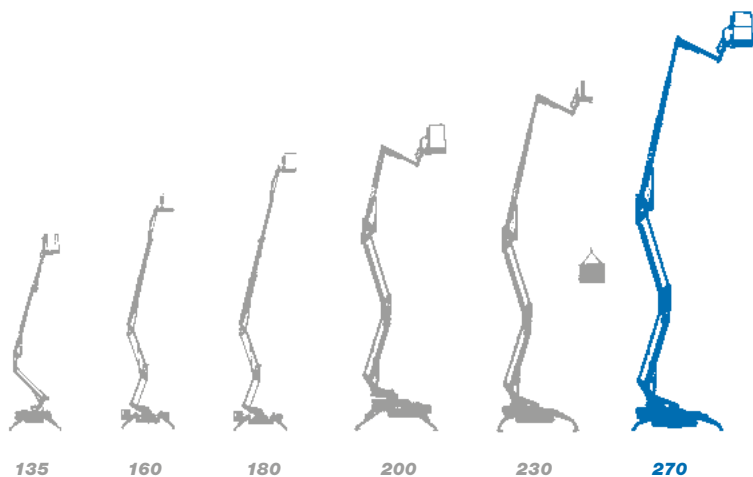


-  **27* m**  **1,4 x 0,7 x 1,1 m**
-  **14* m**  **4.350 kg**
-  **250 kg**  **25* m**

* outreach and height max values and repeatability can change within $\pm 3\%$ due to manufacturing variation and working condition.



Track-mounted range from 13 m to 27 m



- ★ Most versatile boom configuration
- ★ Most compact machines in class
- ★ Clean top boom
- ★ Friendly to use intuitive controls
- ★ Easy maintenance
- ★ Excellent boom rigidity during operation
- ★ Versatility of engines and versions



We are CTE, one of the largest european groups in the field of lifting people and handling of material.



After sales assistance



Service spare parts



Scheduled maintenance



On-site assistance



Authorized workshops

Efficient services, innovative technical solutions, timely assistance, professional advice and training: 'Work Becomes Easy' is all this. A style, a philosophy at the heart of which are our customers, their safety, their quality of life. For this reason there is a group in CTE united by ideas, motivation and passion to simplify the work of companies active in the lifting of people and objects.



CTE s.p.a.
Via Caproni, 7
38068 Rovereto (TN)

Factory
Loc. Terramatta, 5
37010 Rivoli Veronese (VR)

Tel. +39 0464 48.50.50
info@ctelift.com
www.ctelift.com



UNI EN ISO 9001:2008 IT 61659